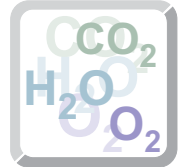




λT Lambda T

CO₂ Monitor/Controller



Continuous CO₂ monitoring and control

High performance NDIR optical bench

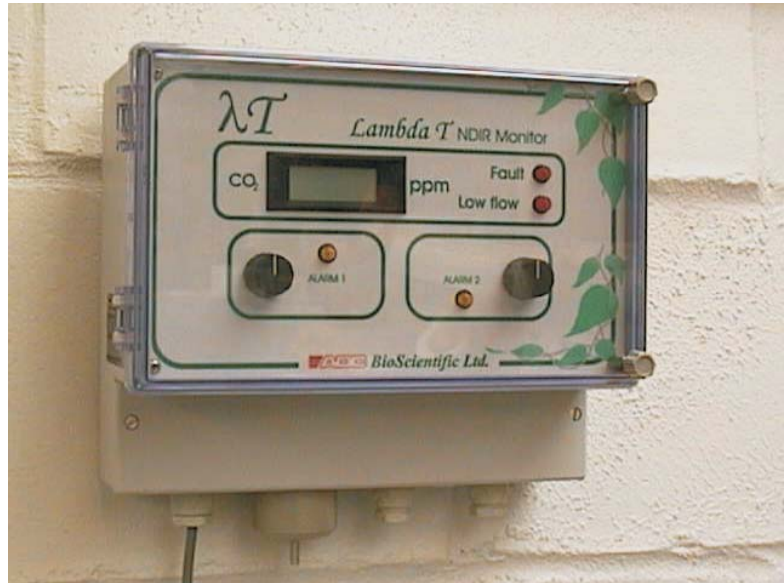
Easy maintenance

Integral sample pump

Two relay trip points

Digital display

Temperature corrected



λT

Lambda T is a high accuracy CO₂ monitor employing a novel twin wavelength, non-dispersive, infra-red, optical technique. This highly stable analysis allows the λT to be used for unattended measurement and control of Carbon dioxide in greenhouses, growth cabinets and any application where elevated levels of the gas are required.

Novel Twin Wavelength Detection System

The λT uses a new, two filter, matched twin element detection system. This technique has many benefits over traditional single wavelength infra-red monitors.

- Gas specific, no cross sensitivity with other gasses.
- Unrivalled long term measurement stability.
- Reliable and robust.
- No interaction with the gas being measured and so do not consume anything from the sample.

Versatile Operation

With an onboard sample pump, λT is ready to be wall or front panel mounted. Operating on 88-138VAC or 172-276VAC, λT can be online and monitoring in minutes.

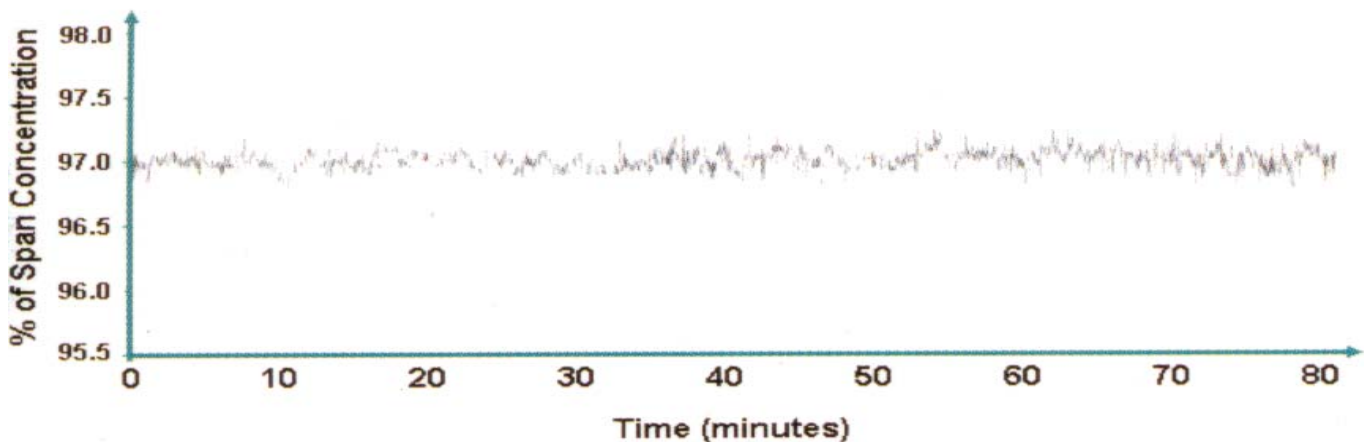
Easy Maintenance

The λT is easily maintained requiring only a few minutes to replace the hydrophobic filter and a simple calibration procedure to check the accuracy, typically once a year.



Specifications

CO₂ Ranges:	0-2000ppm 0-3000ppm 0-1% 0-3% 0-5% 0-10% 0-30% 0-100%	Alarms:	Two user-configurable single pole trip points over the full scale range with LED display indicator.
Accuracy:	+/- 2% of FSD	Outputs:	4-20mA or 0-20mA Linear or non Linear Voltage free changeover relay contacts for both alarms. (8A 240V AC non-inductive).
Stability:	+/- 2% of FSD over 12 months	Operating temperature Range:	0 to 40°C
Repeatability:	+/- 0.3% of FSD at zero	Gas connections:	Push-on connectors for 4mm bore tubing.
Response times		Enclosure:	IP54 rated.
Electrical:	1second	Power requirements:	172 to 276VAC or 88 to 138VAC switchable 13Watts typical
Gas, from Inlet:	Typically < 30 seconds to 90% of signal	Dimensions:	267mm x 258mm x 148mm
Warm-up time:	Operational 3 min, full specification 30mins	Weight:	2.5Kg
Pump:	Mounted internally 1Lmin ⁻¹ 30Meter maximum sample distance		
Display:	Digital readout, 4 digit, 7 segment, high contrast LCD		
Front panel indicators:	Gas reading Flow fail warning Alarm trip indicators Fault indicator.		



1st Floor Charles House, Furlong Way, Great Amwell, Herts SG12 9TA, UK
 Tel:+44(0)1920 487901 Fax:+44(0)1920 466289
 Email: sales@adc.co.uk Website:http://www.adc.co.uk

